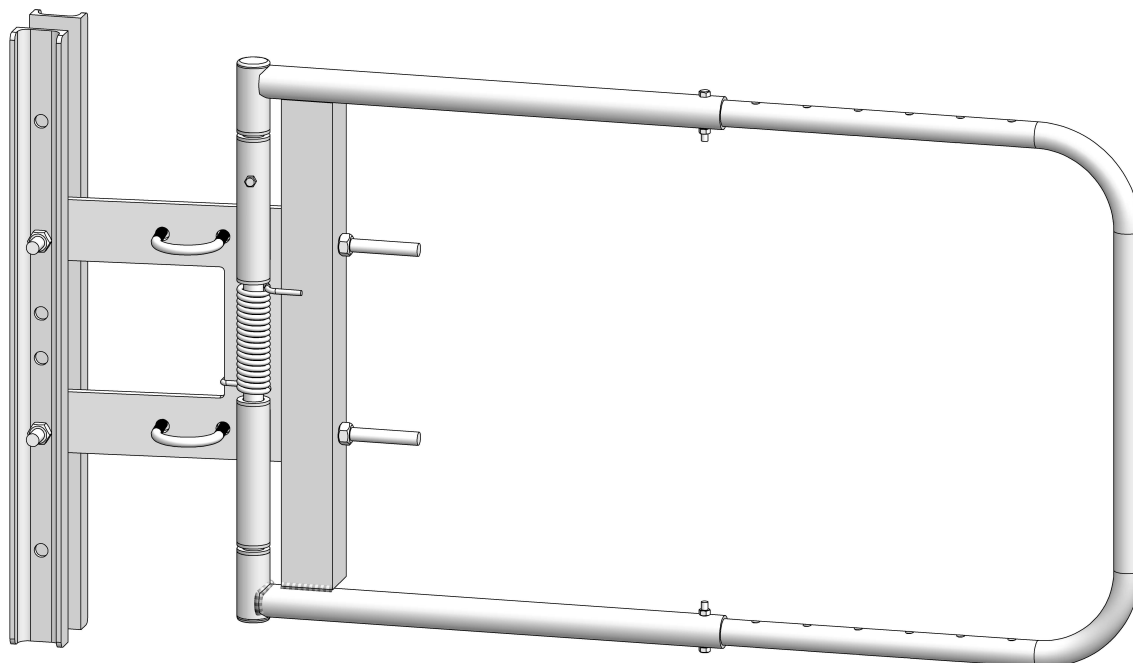


# EGA SELF-CLOSING GATES

W/ BEARINGS

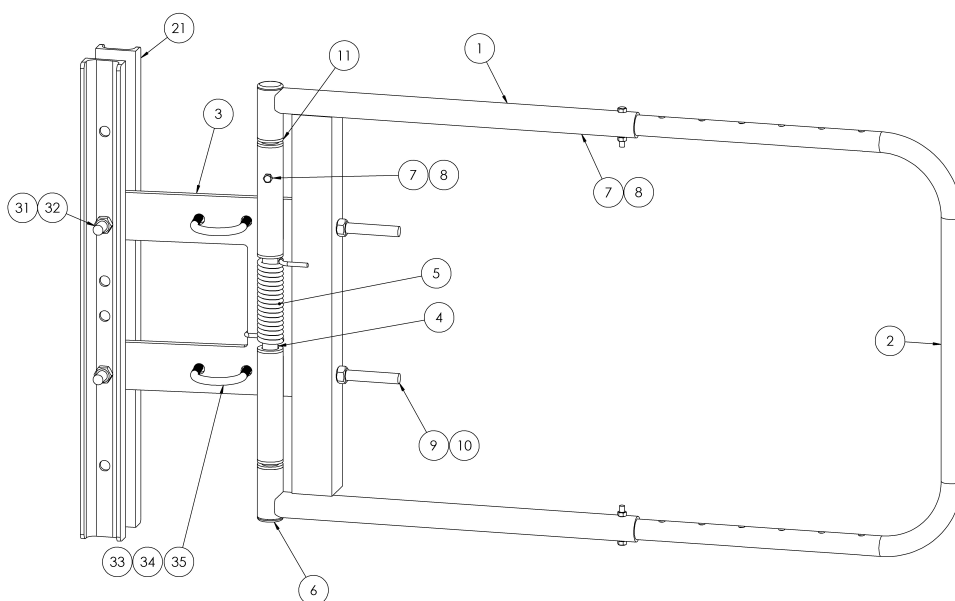
MODELS: SCG-N-Y SCG-W-Y  
SCG-X-Y SCG-N-G  
SCG-W-G SCG-X-G  
SCG-N-S SCG-W-S  
SCG-X-S



# INSTALLATION INSTRUCTIONS



EGA PRODUCTS, INC., BROOKFIELD, WI & MOORESVILLE, NC (800) 937-3427  
<http://www.egaproducts.com>



## PACKING LIST

### SCG-"A"-"B" SELF CLOSING GATE w/ BEARINGS

ITEM	QTY	COMPONENT
<b>ASSEMBLED GATE</b>		
- 01	1	GATE ASSEMBLY
- 02	1	EXTENSION RAIL
- 03	1	MOUNT ASSEMBLY
- 04	1	S.S. HINGE PIN - 3/4" Ø TUBE
- 05	1	S.S. TORSION SPRING (ppn# 34503A)
- 06	2	TUBE CAP 1-1/4" Ø (ppn# 12031)
- 07	3	1/4-20 X 1-3/4"L HEX BOLT (ppn# 80121)
- 08	3	1/4-20 HEX STOP NUT (ppn# 80127)
- 09	2	1/2-13 X 4-1/2"L CARRAIGE BOLT (ppn# 80322)
- 10	4	1/2-13 HEX NUTS (ppn# 90309)
- 11	6	FLANGED BEARNGS (ppn# 34507)
- 21	2	MOUNT CHANNELS *
- 22	1	INSTALLATION INSTRUCTIONS
<b>INSTALLATION HARDWARE PACK *</b>		
- 31	2	1/2-13 X 3-1/2"L HEX BOLT (ppn# 80321)
- 32	4	1/2-13 HEX NUTS (ppn# 90309)
- 33a	2	3/8-16 "U" BOLT (ppn# 80238)
- 33b	2	3/8-16 SQ "U" BOLT (ppn# 80239)
- 33c	2	3/8-16 "J" BOLT (ppn# 80237)
- 34	4	3/8-16 HEX STOP NUTS (ppn# 80231)
- 35	4	3/8 FLAT WASHERS (ppn# 80227)

#### PART IDENTIFICATION:

#### SCG-"A"-"B" SELF CLOSING GATE:

"A" = Gate Width: N (for Narrow 16"-26"), W (for Wide 24"-40"),  
X (for Extra Wide 40"-48")

"B" = Finish: Y (for Yellow powder coat), G (for hot dip Galvanized),  
S (for Stainless Steel)

#### COMPONENTS:

Part SCG-N-Y-33c would be a "J" Bolt for a narrow gate w/yellow finish

\* = For surface mount installations, these components are not required.

# EGA SELF-CLOSING GATES

## Installation Instructions

Please read all instructions before assembling this product. Do not begin assembly unless all parts listed in the packing list are present.

**WARNING:** Injuries may occur unless proper care and safe guards are practiced thru out the installation process. Read all instructions thoroughly. Do not proceed if you are impaired in any way or are unable to understand the instructions in this document.

### I. Mounting Method

Self-closing gates may be surface mounted to a wall or to existing railing systems. These surfaces must be of sound construction and capable of resisting the forces transferred to them from the continuous functioning of the gate.

If the gate is to be installed into an existing railing system, select the appropriate fasteners for mounting the gate to the end post of the rail.

<u>Use:</u>	<u>If the end post is a:</u>
"U" Bolts (item 33a)	round pipe or tube post
Sq "U" Bolts (item 33b)	square tube post
"J" Bolts (item 33c)	angle post

If the gate is to be surface mounted, use (4) ½" anchor bolts of a suitable type (not provided) to mount the gate.

### II. Positioning of Gate

Self-closing gates should be positioned such that the top horizontal rail of the gate is at the same height as the existing railing systems. This height is typically 42" above the walking surface.

Gates may be installed with the hinge on the right or left, and swing inward or outward. Determine the direction and swing style before starting the assembly. Some existing railing systems may limit these choices.

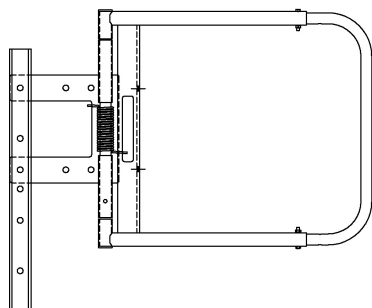
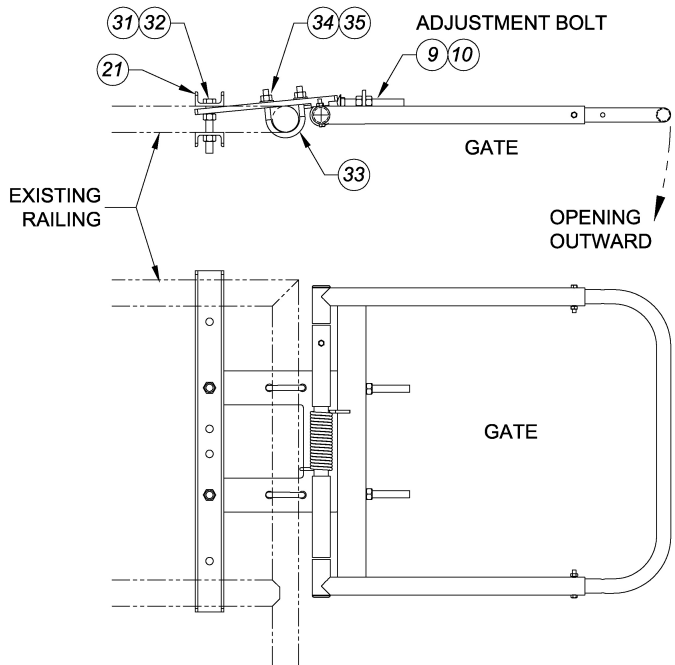
### III. Installation of Gate

Attach the gate to the existing rail end post as shown below. Snug the fasteners only at this point. Do not tighten fully until the complete installation has been achieved.

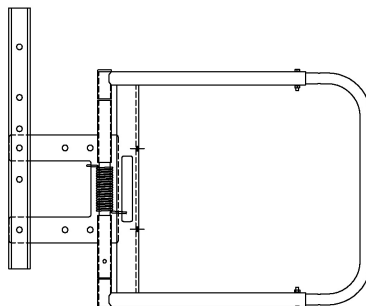
The illustration at the right shows an installation with hinge on the left and an opening outward gate swing direction.

The mount channels (item 21) are shown in a centered vertical position.

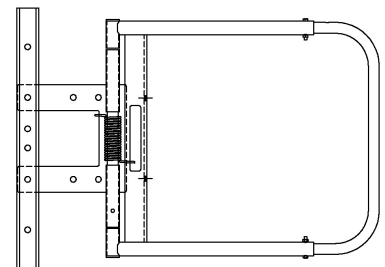
These mount channels may be installed in top, bottom or centered position to accommodate various field conditions.



top position

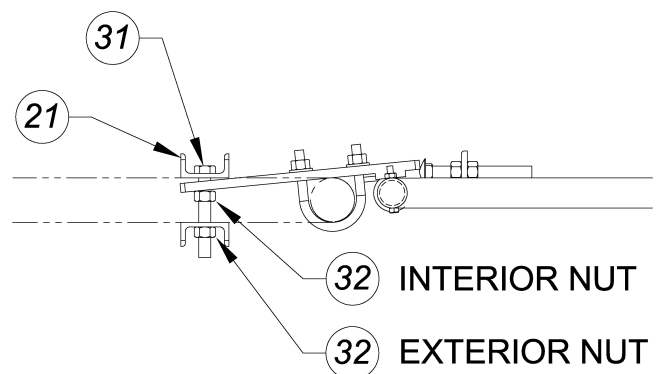


bottom position



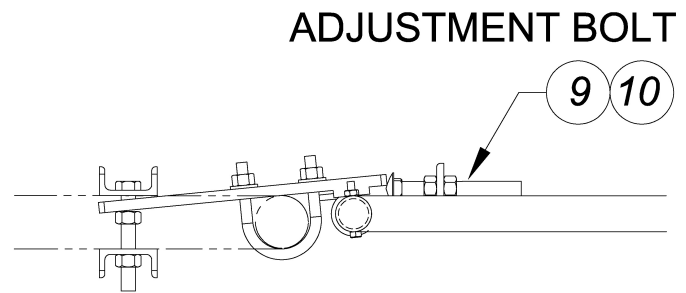
centered position

Secure the channels by passing the fastener (item 31) thru channels and mount assembly (item 3); loosely placing the interior nut (item 32) until the exterior nut (item 32) firmly secures the mount channels against the railing. Finish securing the gate by tightening the interior nuts and “U” or “J” bolts.



#### IV. Adjustment of Gate

The adjustment carriage bolts (items 9 & 10) on the inside of the gate allows for adjustment of the closed angle of the gate. The head of the bolts acts as a stop to prevent inward movement of the gate.



The gate is adjustable in width in 2" increments. To adjust the width, remove the fasteners (items 7 & 8), expand or retract rail to desired width and refasten upper and lower rails.

Inspect the completeness of the installation. Work the gate and ensure the gate functions properly.

If the "U" or "J" bolt ends hinder the proper working of the gate, trim and debur the ends of these bolts.

Upon completion of all adjustments to the gate installation and position; securely tighten all fasteners. DO NOT use the gate if any fastener is not properly tightened.

#### WARNING

DO NOT prop the gate in an open position. A fall resulting in serious injury or even death could occur if the self-closing gate is propped open. A closed gate which is not allowed to open also could impede exit and lead to accident or injury.

Maintain the operation of the gate by periodic inspection of it. Remove any foreign material from the gate. Keep the gate clean and inspect fasteners for any loosening and retighten as needed.

If gate becomes damaged at any time or fails to function properly; immediately repair or replace the gate.

Retain these instruction for future use. Forward a copy of them to building maintenance or other responsible party.

## Self Closing Gate Inspection

[illegible]