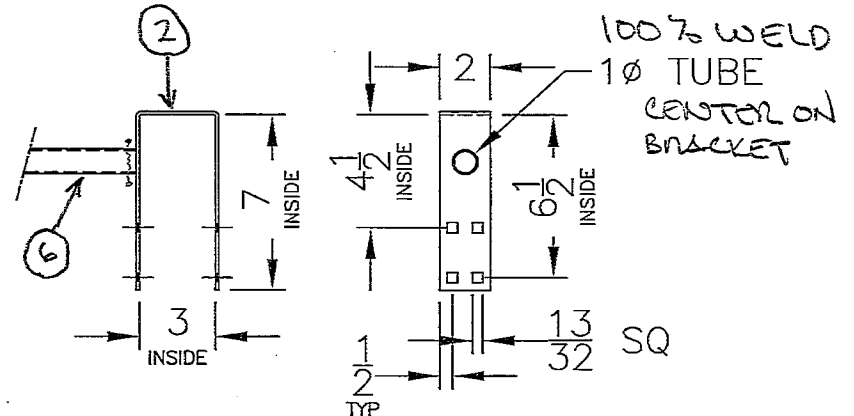


PAINTED EGA YELLOW

EGA ENAMEL PAINTS ARE INTENDED FOR INDOOR USE ONLY.

IMPORTANT:
THIS DRAWING IS SUBJECT TO EGA'S STANDARD TOLERANCES. PLEASE NOTE ANY CRITICAL DIMENSIONS YOU MAY REQUIRE.



BRACKET

WHAT DEPTH PALLET RACK IS THIS DIVIDER FOR? _____" (ADVISE)

INSTALLATION HARDWARE IS NOT INCLUDED

THIS DRAWING INCLUDES PROPRIETARY DATA THAT IS OWNED BY EGA PRODUCTS, INC. THIS DATA SHALL NOT BE DUPLICATED OR DISCLOSED IN WHOLE OR IN PART FOR ANY PURPOSE BEYOND EGA'S REPRESENTATIVES, DISTRIBUTORS OR CUSTOMERS FOR WHOM THIS DATA IS INTENDED.

THE FURNISHING OR POSSESSION OF THIS DRAWING OR ANY REPRODUCTIONS THEREOF DOES NOT CONVEY ANY MANUFACTURING RIGHTS.

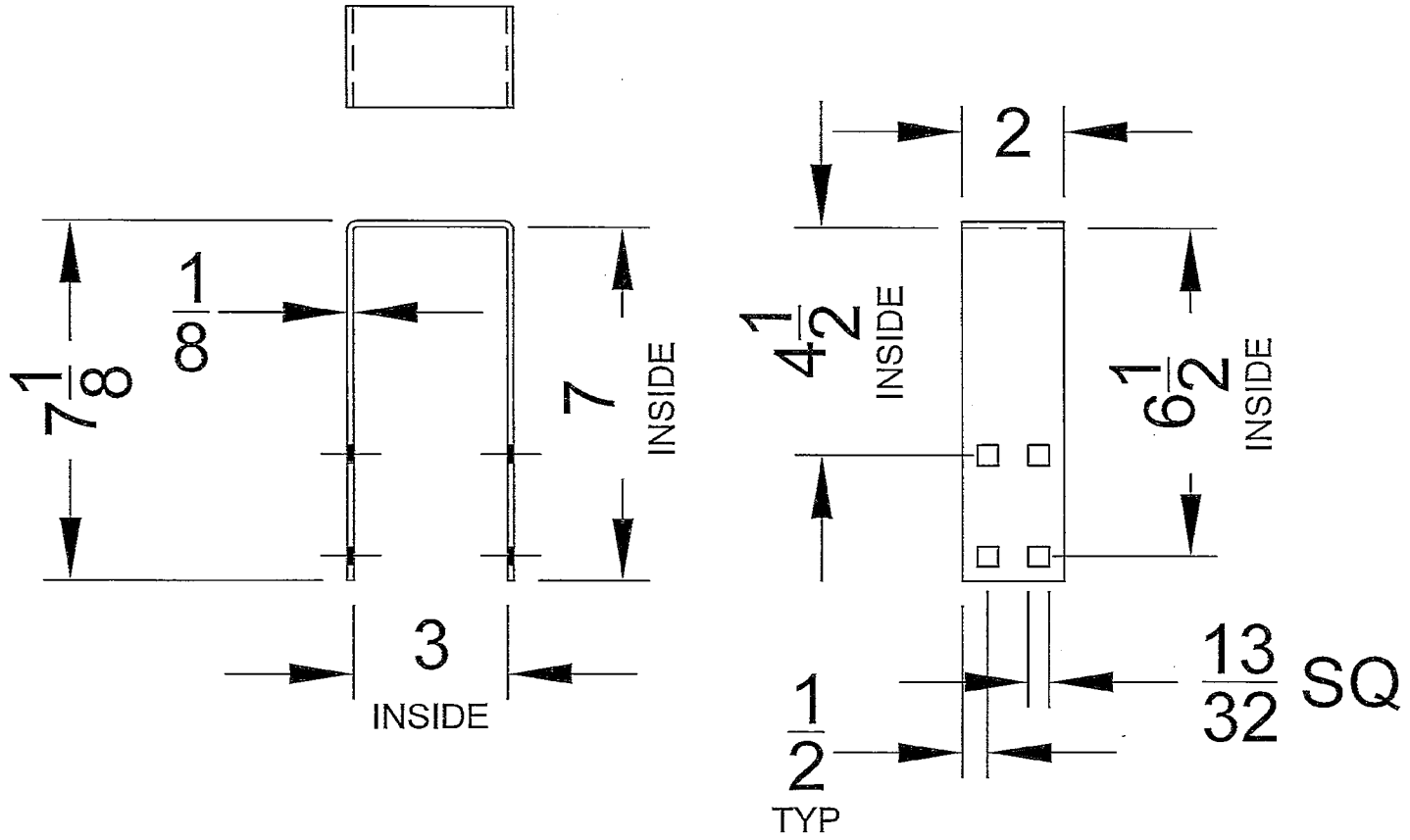
DIVIDER FOR A 42" MIN
OA DEPTH PALLET RACK

APPROVAL DRAWING

- APPROVED AS DRAWN
- APPROVED AS CORRECTED
- NOT APPROVED

SIGNATURE _____ DATE _____ NAME (PRINTED) _____

 EGA Products, Inc. Material Handling Equipment P.O. BOX 366 · BROOKFIELD, WI 53008-0366 (262) 781-7899 · FAX (262) 781-3586 AND MOORESVILLE, NORTH CAROLINA	PROJECT: M Pallet Rack Divider #MD54-42		SCALE: NONE		QUOTE/JOB NO.: ---	
	DISTRIBUTOR (END USER): Catalog Item		SHEET: 1 OF 1		DRAWING NO.: MD54-42	
DATE DRAWN: 5/24/17	DRAWN BY: SEK	REV DATE: 6/17/21	REV. C			



2

MATERIAL: 1/8 X 2 HR STRIP
OR 11GA HR SHEET

THIS DRAWING INCLUDES PROPRIETARY DATA THAT IS OWNED BY EGA PRODUCTS, INC. THIS DATA SHALL NOT BE DUPLICATED OR DISCLOSED IN WHOLE OR IN PART FOR ANY PURPOSE BEYOND EGA'S REPRESENTATIVES, DISTRIBUTORS OR CUSTOMERS FOR WHOM THIS DATA IS INTENDED.

THE FURNISHING OR POSSESSION OF THIS DRAWING OR ANY REPRODUCTIONS THEREOF DOES NOT CONVEY ANY MANUFACTURING RIGHTS.



EGA Products, Inc.
Material Handling Equipment
(262) 781-7899 • FAX (262) 781-3586
4275 N. 127th St. • BROOKFIELD, WI 53005-1890
AND MOORESVILLE, NORTH CAROLINA

PROJECT: Divider Brackets - 1 pc			SCALE: NONE	QUOTE/JOB NO.: *	
DISTRIBUTOR (END USER): *			SHEET 1 OF 1	DRAWING NO.:	REV.
DATE DRAWN: 4/2/20	DRAWN BY: SEK	REV DATE: 6/17/21		PPN 55500	C